

REFLECTION



PARTICLES
COLLECTION



 **ARTGLASS**
CHANDELIERS FROM BOHEMIA

INSTALLATION **REFLECTION**

This installation, consisting of several segments of irregular shapes, is inspired by the image of a single drop falling onto the water's surface. The living surface of the water is simulated by lines on unusual innovative material, the subject of everyday use, which gives it a new artistic use.





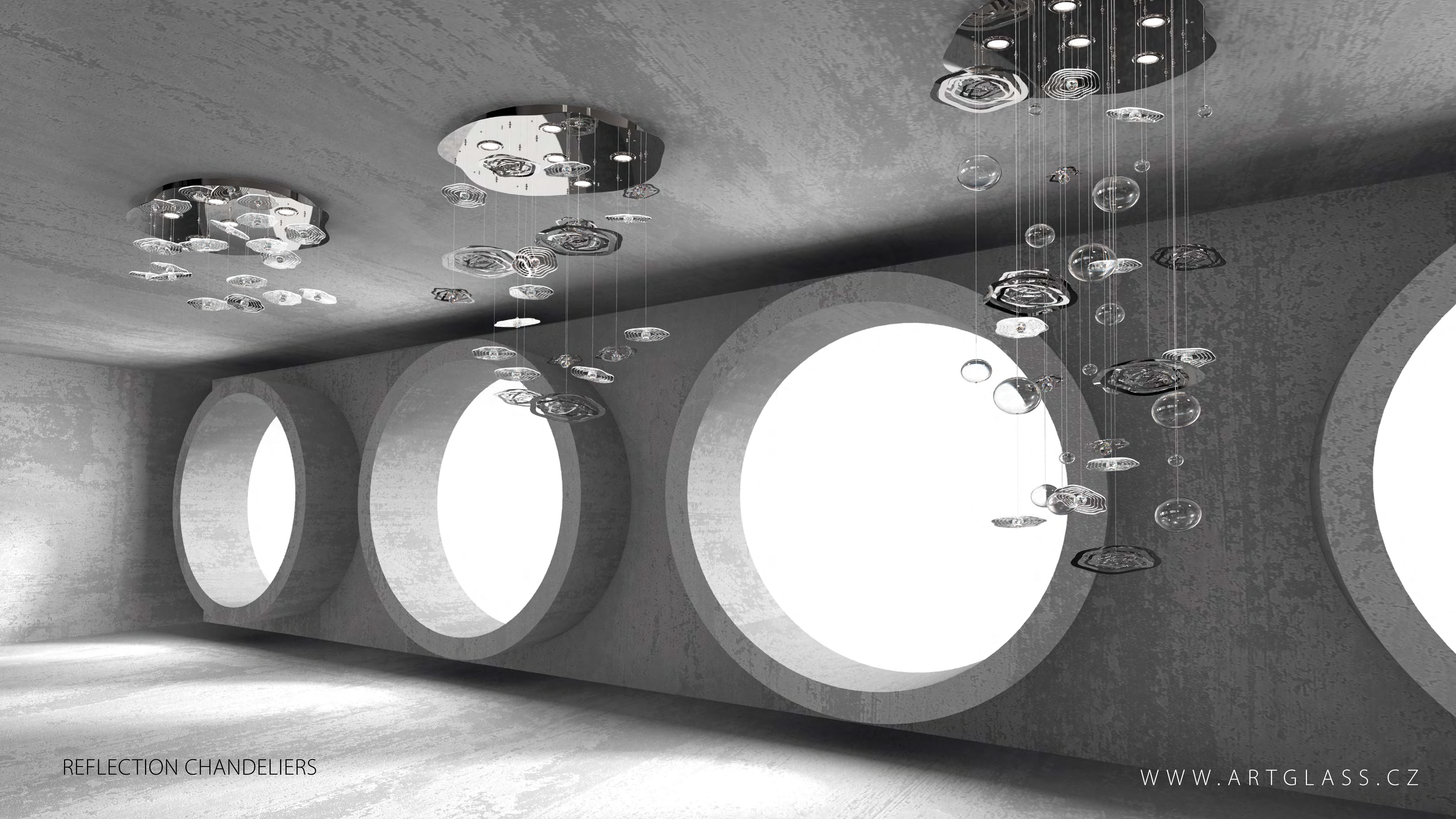


Its reflection mirrors not only the glittering stone, but also the moment of presence, the surrounding world, the record of the situation that is the reflection / capture of today's society. The transformation of this shape also resulted in metal segments, in which the intentional deformation emphasises the dynamics of movement.



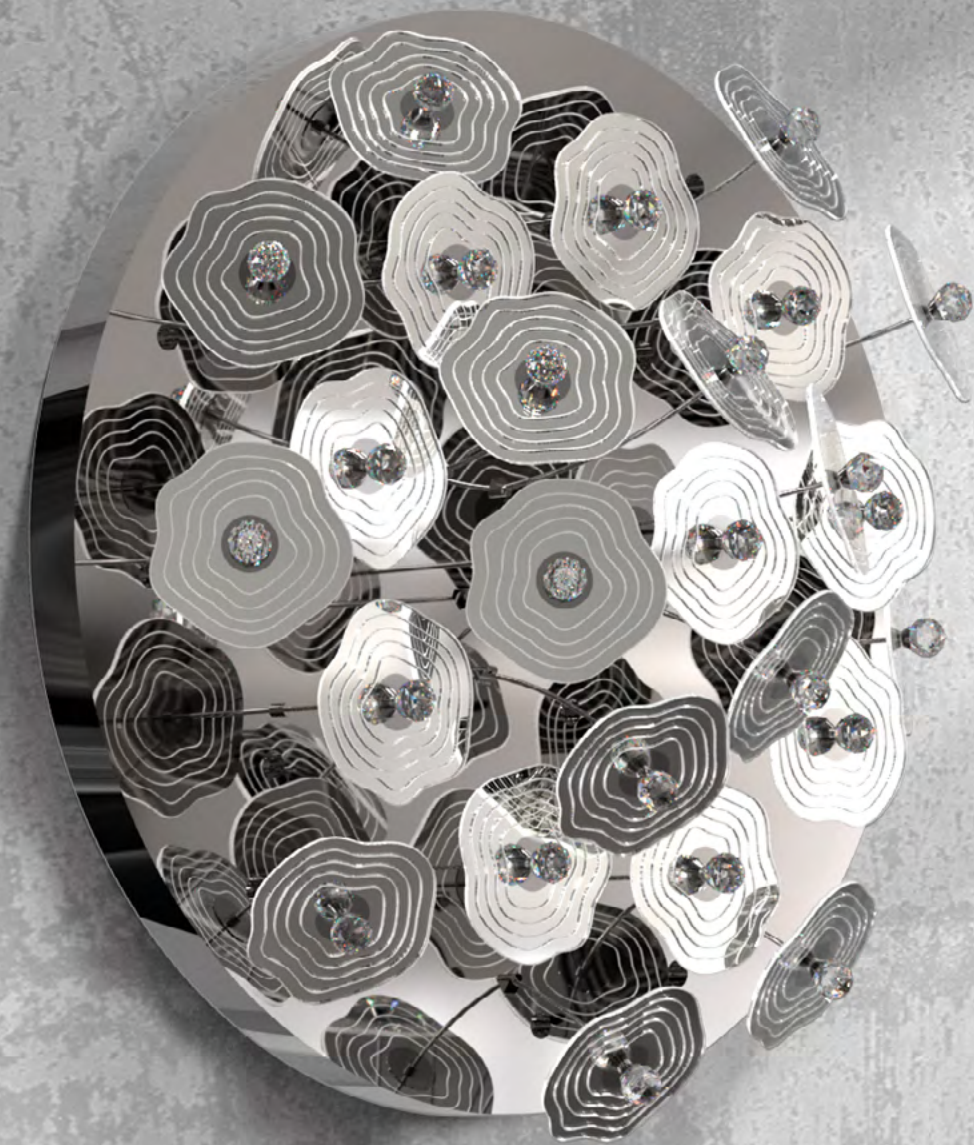






REFLECTION CHANDELIERS

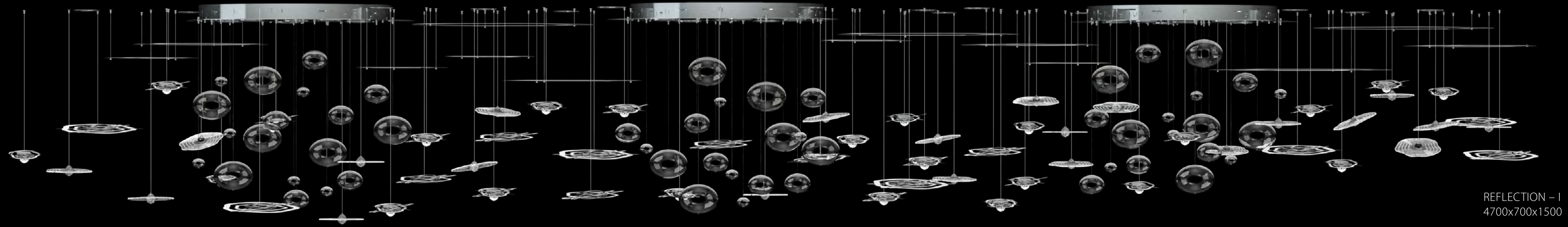
WWW.ARTGLASS.CZ



REFLECTION WALL LAMPS

WWW.ARTGLASS.CZ

LIGHTING FIXTURE

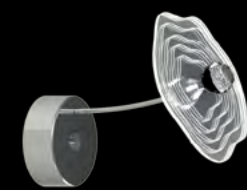


REFLECTION - I
4700x700x1500

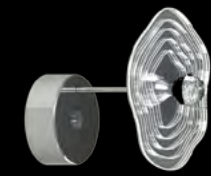
WALL LAMPS



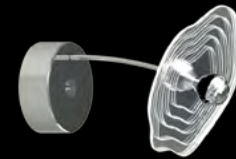
REFLECTION 01 - WL
800x300 | 25x1W LED



REFLECTION 02 - WL
150x200 | 1x1W LED



REFLECTION 03 - WL
150x180 | 1x1W LED



REFLECTION 04 - WL
150x200 | 1x1W LED

NOTE

REFLECTION's quintessential elements are sandblasted mirrors, which are paired with cut metal frames or other glass elements to achieve the perfect look.

Lighting fixtures are shown here for the purposes of illustration only and the designs can be tailored depending on the client's requirements and technical feasibility. Likewise, the full range of surface finishes and colour designs may be more extensive than those shown.

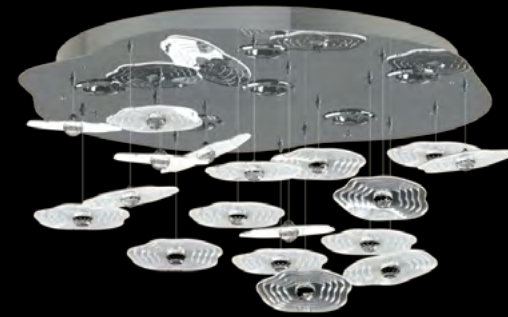
CHANDELIERS



REFLECTION 01 - CH
700x850 | 6x25W

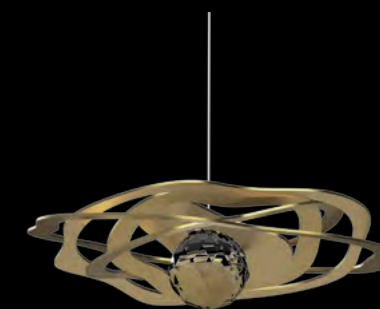


REFLECTION 02 - CH
700x550 | 6x25W



REFLECTION 03 - CH
700x300 | 6x25W

MATERIALS



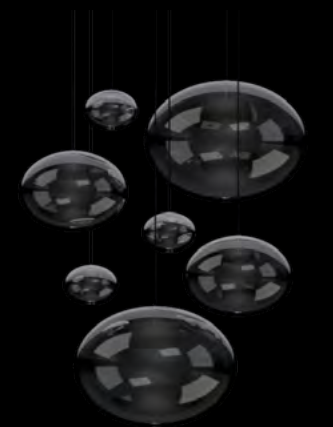
MATT BRASS
+ BALL 30



STAINLESS STEEL
(REVERSE MATT)
MATT + BALL 30



SANDBLASTED
MIRROR + BALL 30



GLASS OVALS
40-120

Designed by Petra Vondráčková



WWW.ARTGLASS.CZ



ARTGLASS
CHANDELIERS FROM BOHEMIA

ARTGLASS s.r.o., Smetanova 1659/42, 466 01 Jablonec nad Nisou
info@artglass.cz, +420 483 369 111, +420 483 369 113
CZECH REPUBLIC

www.artglass.cz